

# LEVEL ACCESS INSTALLATION

## WOOD FLOORS

Fixing a level access wetroom onto a traditionally constructed board and joist floor is straight forward but it's recommended the work is carried out by a qualified professional. A feasibility site survey should also be carried out in advance to ascertain the length, direction of the waste and joists etc.



1. Remove floorboards to the nearest joist where the shower tray will be located.



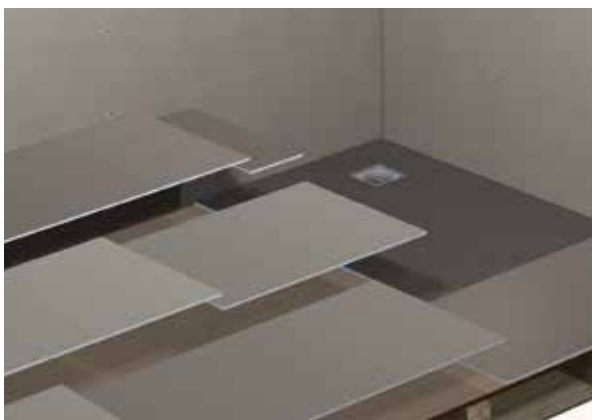
2. Install the waste ensuring adequate run off.



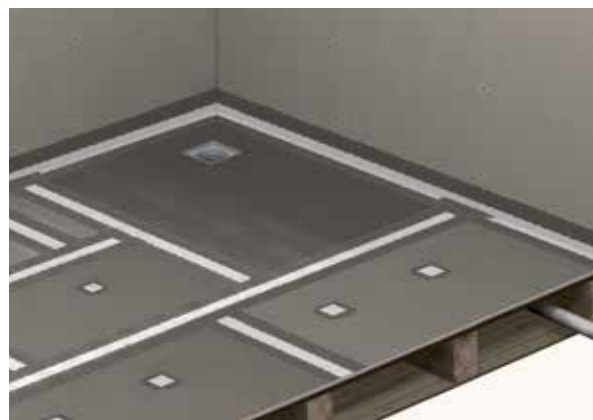
3. Fix timber supports in between joists - these should be fixed low enough to bring your timber panels to the top of the joist.



4. Fix timber panels to support ensuring a level deck at joist height.



5. Fit shower tray and floor panels to entire floor area using board fixing adhesive and screws.

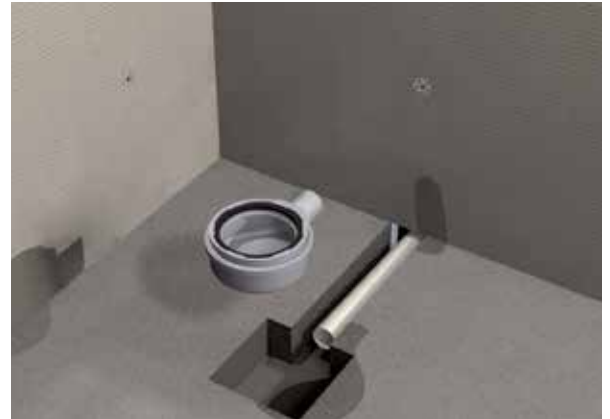


6. Seal all joints and fixings with waterproof joint sealing tape and corners. Your level access wetroom is now ready to tile.

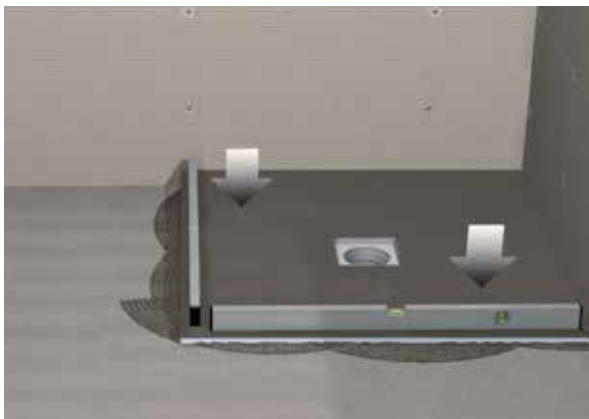
## CONCRETE FLOORS



1. You will need to cut out the concrete floor to recess the waste and tray where appropriate.



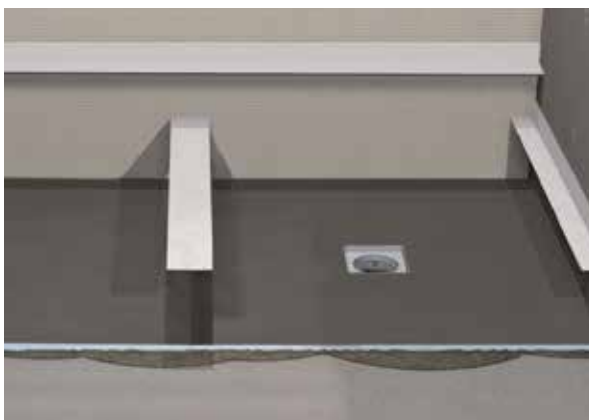
2. Fit the horizontal waste into position within the concrete floor.



3. Fit the shower tray into position using fixing adhesive.



4. Fit waterproof corners.



5. Fit floor panels to entire floor area sealing joints with waterproof joint tape.



6. Your level access wetroom is now ready to tile.